

FISHWAY STATUS REPORT - JOHN DAY DAM

Date: 1/2/2021

Inspection Period: 12/27/2020 thru 1/2/2021



**US Army Corps
of Engineers**
Portland District

JD/WC Project-Fisheries
P.O. Box 823
Rufus, Oregon 97050
Phone: 541-506-7860

All JD Fishways are inspected twice per day during fish passage season, Mar. 1 - Nov. 30.
Additional and frequent monitoring, of the PLC displays in SMF Fisheries Office, as necessary.

| John Day Dam | Inspection OOC | Criteria Limit | Total Number of Inspections: 6 | | | | Temperature: | 43.2 F |
|-------------------------------------|-------------------|-------------------|--------------------------------|------|------------------------|-----|--------------|---------|
| | | | | | | | Secchi: | 6.0 Ft. |
| NORTH FISHWAY | | | | | | | | |
| Exit differential | 0 | ≤ 0.5' | | | | | | |
| Exit Control weirs | 0 | High setting | High setting is normal | | | | | |
| Count station differential | 0 | ≤ 0.3' | | | | | | |
| Entrance differential | 0 | 1.0' - 2.0' | AVG (Ft.) | OOS | | | | |
| SOUTH FISHWAY | | | | | | | | |
| Exit differential | 0 | ≤ 0.5' | | | | | | |
| Exit Control weirs | 0 | Mid setting | Mid setting is normal | | | | | |
| Count station differential | 0 | ≤ 0.3' | | | | | | |
| Weir crest depth (US gauge) | 0 | 1.0' ± 0.1' | | | | | | |
| South entrance differential | 0 | 1.0' - 2.0' | AVG (Ft.) | 1.2 | | | | |
| Entrance weir SE1 | 0 | depth (≥ 8') | AVG (Ft.) | 9.1 | | | | |
| Collection channel velocity | 0 | 1.5 - 4 fps | AVG (Ft.) | 2.65 | | | | |
| N. Entrance PH(Bay 19)differential | 0 | 1.0' - 2.0' | AVG (Ft.) | 1.3 | | | | |
| Entrance weir NE1 | 0 | depth (≥ 8') | AVG (Ft.) | 9.7 | | | | |
| Entrance weir NE2 | 0 | depth (≥ 8') | AVG (Ft.) | 9.9 | | | | |
| JUVENILE PASSAGE | | | | | | | | |
| Forebay/bypass conduit differential | 0 | 4.0' - 5.0' | AVG (Ft.) | 4.7 | | | | |
| Submersible traveling screens | 0 | visual inspect | Last Visual Inspection | | Next Visual Inspection | | | |
| Turbine trashrack drawdown | 0 | <1.5', wkly | | | | | | |
| Vert barrier screen drawdown | 0 | <1.5', wkly | | | | | | |
| Spill volume | 0 | per FPP | Avg (kcfs) | OOS | Avg % | OOS | | |
| Spill pattern | 0 | per FPP | | | | | | |
| Turbine Unit Priority | 0 | per FPP | | | | | | |
| Turbine 1% Efficiency | 0 | per FPP | | | | | | |

Fisheries Related Operations

Smolt Monitoring Operations:

Smolt Monitoring Facility has been dewatered for the winter.

Adult Ladder Operations:

JD South Adult Fishway is operating within criteria. South Fish ladder is scheduled to be dewatered mid-January.
JD North Adult Fishway is dewatered.

Project Operations:

Current outages: MU1, MU2, MU3, MU4, MU6, MU7, MU9, MU12.
Tailwater Average Weekly TDG

Maintenance:

JD North Fishway's pump 4 has been pulled for maintenance. - JD Maintenance continue repairs of AWS fish pump 4. RTS has yet TBD.
Calibration - All gauges within the 0.3' criteria.

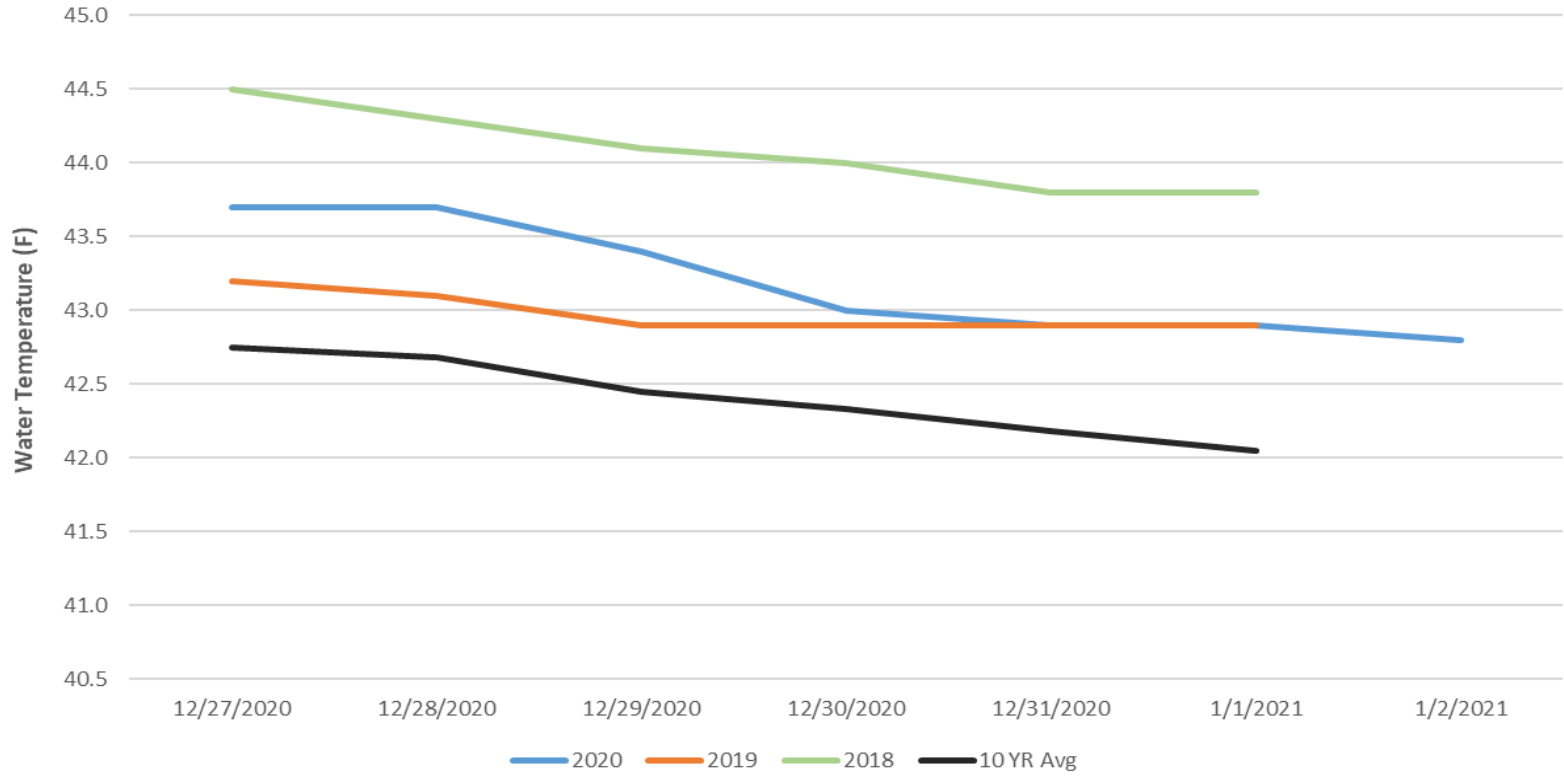
Bird Data:

Decreasing foraging and non foraging gulls this week. (see 'Bird Count' tab for details).
1 of 125 avian lines down, will need to be replaced
Pelicans on Preacher's Island: averaged 0 per day

Research:

Approved by: Brett Call, OPM

John Day Dam Water Temperatures (F)



JDA Collection Channel Velocity

FPP Criteria: 1.5–4.0 feet per second (2 fps optimum)

| Date | Measurement Location | Speed (ft/sec) | SFL Turbine RPMs (1,2,3) | Bay 19 TW (ft) |
|------------|----------------------|----------------|--------------------------|----------------|
| 12/28/2020 | Unit 4 | 2.58 | 0,68,68 | 160.3 |
| 12/28/2020 | Unit 12 | 2.61 | 0,68,68 | 160.3 |
| 12/29/2020 | Unit 4 | 2.60 | 0,68,68 | 160.5 |
| 12/29/2020 | Unit 12 | 2.74 | 0,68,68 | 160.5 |
| 1/2/2021 | Unit 4 | 2.60 | 0,68,68 | 160.6 |
| 1/2/2021 | Unit 12 | 2.75 | 0,68,68 | 160.6 |

Average Weekly Velocity (ft/sec)

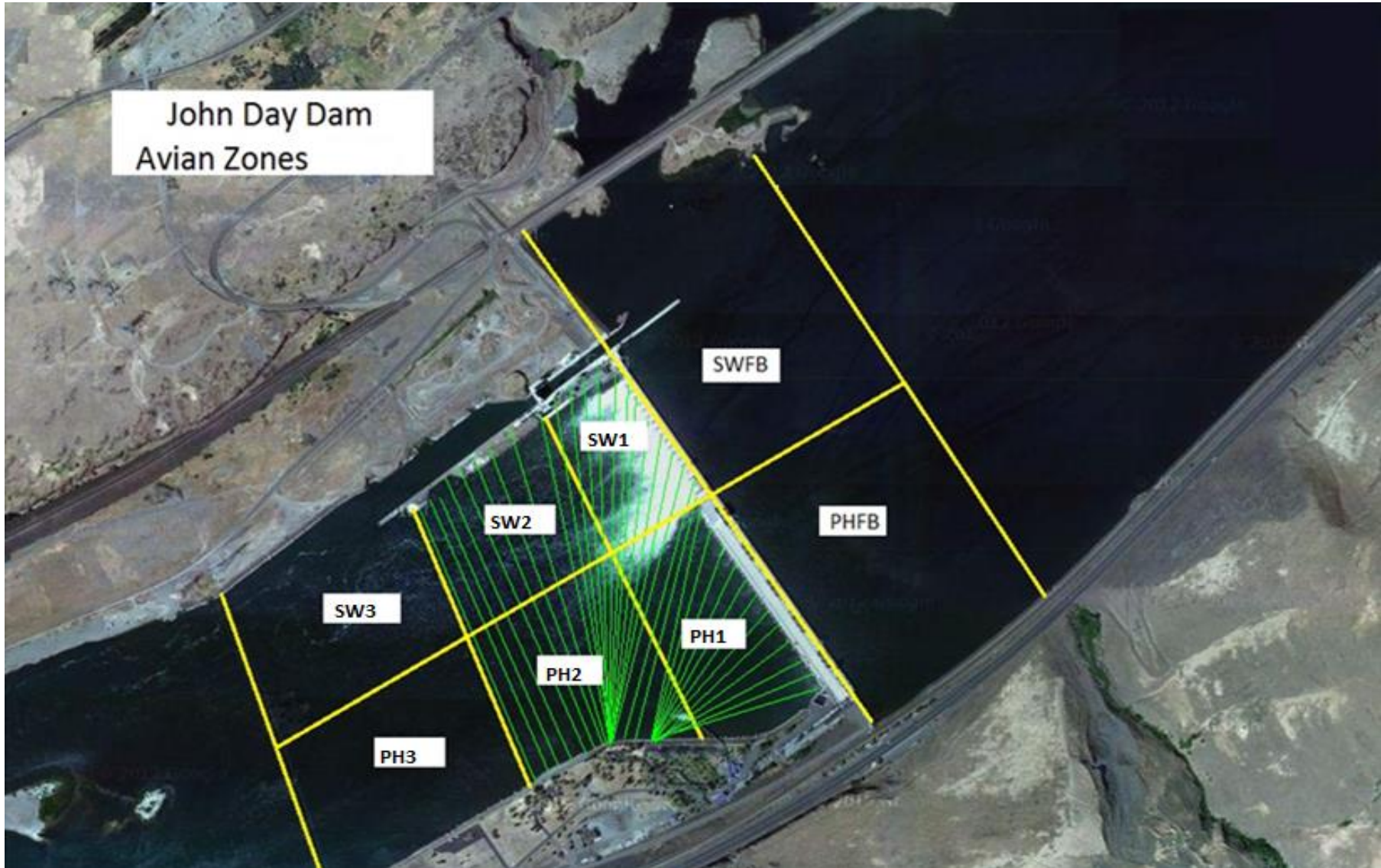
2.65

JOHN DAY WEEKLY AVERAGES

| | NE1 (Ft) | NE2 (Ft) | S.Ent (Ft) | SE1 (Ft) | N.Ent (Ft) | JBS Diff (Ft) | Bay19 (Ft) | Spill Vol. (kcfs) | Spill % | # Spillbays |
|------------------|------------|------------|------------|------------|------------|---------------|------------|-------------------|------------|-------------|
| Sunday | 9.5 | 9.7 | 1.2 | 8.9 | OOS | 5.0 | 1.3 | OOS | OOS | OOS |
| Monday | 9.5 | 9.7 | 1.1 | 9.4 | OOS | 4.6 | 1.5 | OOS | OOS | OOS |
| Tuesday | 9.7 | 9.9 | 1.2 | 8.9 | OOS | 4.6 | 1.1 | OOS | OOS | OOS |
| Wednesday | 10.0 | 10.2 | 1.1 | 9.3 | OOS | 4.6 | 1.2 | OOS | OOS | OOS |
| Thursday | 9.9 | 10.1 | 1.2 | 9.0 | OOS | 4.6 | 1.4 | OOS | OOS | OOS |
| Friday | | | | | OOS | | | OOS | OOS | OOS |
| Saturday | 9.8 | 10.0 | 1.2 | 8.8 | OOS | 4.5 | 1.4 | OOS | OOS | OOS |
| AVG: | 9.7 | 9.9 | 1.2 | 9.1 | OOS | 4.7 | 1.3 | OOS | OOS | OOS |

| | Temp (F) | Secchi (Ft) | Fallbacks | Pelicans on Island |
|------------------|-------------|-------------|------------|--------------------|
| Sunday | 43.7 | 6.0 | N/A | |
| Monday | 43.7 | 6.0 | N/A | |
| Tuesday | 43.4 | 6.0 | N/A | |
| Wednesday | 43.0 | 6.0 | N/A | |
| Thursday | 42.9 | 6.0 | N/A | |
| Friday | 42.9 | 6.0 | N/A | |
| Saturday | 42.8 | 6.0 | N/A | |
| AVG | 43.2 | 6.0 | N/A | #DIV/0! |

John Day Dam
Avian Zones

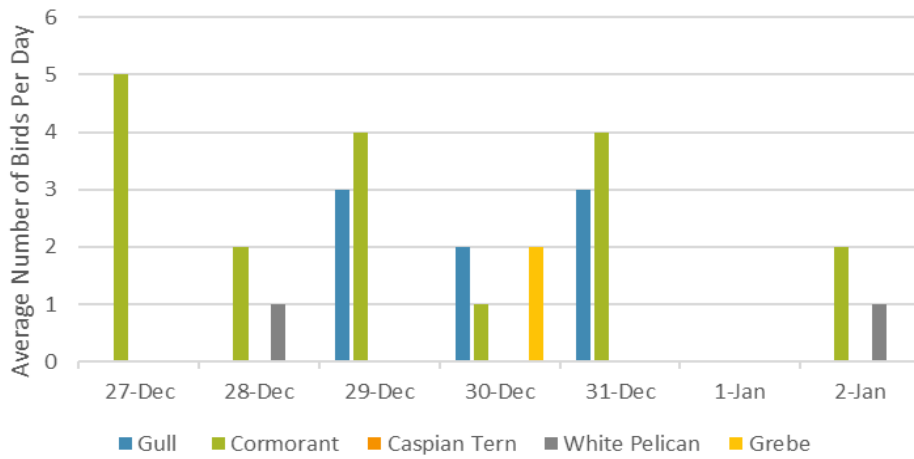


JDA Bird Counts: 12/27/20 to 1/2/21

F(1): Forage AM survey F(2): Forage PM Survey NF(1): Non-Forage AM Survey NF(2): Non-Forage PM Survey

| Date | Zone | Gulls | | | | Cormorant | | | | Caspian tern | | | | White Pelican | | | | Grebe | | | | Total |
|-------------------|------|----------|------|----------|-------|-----------|------|-----------|-------|--------------|------|----------|-------|---------------|------|----------|-------|----------|------|----------|-------|-----------|
| | | F(1) | F(2) | NF(1) | NF(2) | F(1) | F(2) | NF(1) | NF(2) | F(1) | F(2) | NF(1) | NF(2) | F(1) | F(2) | NF(1) | NF(2) | F(1) | F(2) | NF(1) | NF(2) | |
| 27-Dec | PHFB | 0 | 0 | 7 | 0 | 0 | 0 | 0 | 0 | 0 | 0 | 0 | 0 | 0 | 0 | 0 | 0 | 0 | 0 | 0 | 0 | 7 |
| 27-Dec | SWFB | 0 | 0 | 0 | 0 | 0 | 0 | 0 | 0 | 0 | 0 | 0 | 0 | 0 | 0 | 0 | 0 | 0 | 0 | 0 | 0 | 0 |
| 27-Dec | PH1 | 0 | 0 | 0 | 0 | 5 | 0 | 0 | 0 | 0 | 0 | 0 | 0 | 0 | 0 | 0 | 0 | 0 | 0 | 0 | 0 | 5 |
| 27-Dec | PH2 | 0 | 0 | 0 | 0 | 0 | 0 | 0 | 0 | 0 | 0 | 0 | 0 | 0 | 0 | 0 | 0 | 0 | 0 | 0 | 0 | 0 |
| 27-Dec | PH3 | 0 | 0 | 0 | 0 | 0 | 0 | 0 | 0 | 0 | 0 | 0 | 0 | 0 | 0 | 1 | 0 | 0 | 0 | 0 | 0 | 1 |
| 27-Dec | SW1 | 0 | 0 | 0 | 0 | 0 | 0 | 0 | 0 | 0 | 0 | 0 | 0 | 0 | 0 | 0 | 0 | 0 | 0 | 0 | 0 | 0 |
| 27-Dec | SW2 | 0 | 0 | 0 | 0 | 0 | 0 | 51 | 0 | 0 | 0 | 0 | 0 | 0 | 0 | 0 | 0 | 0 | 0 | 0 | 0 | 51 |
| 27-Dec | SW3 | 0 | 0 | 0 | 0 | 0 | 0 | 0 | 0 | 0 | 0 | 0 | 0 | 0 | 0 | 0 | 0 | 0 | 0 | 0 | 0 | 0 |
| Avg/Survey | | 0 | | 7 | | 5 | | 51 | | 0 | | 0 | | 0 | | 1 | | 0 | | 0 | | 64 |
| 28-Dec | PHFB | 0 | 0 | 5 | 0 | 0 | 0 | 0 | 0 | 0 | 0 | 0 | 0 | 0 | 0 | 0 | 0 | 0 | 0 | 0 | 0 | 5 |
| 28-Dec | SWFB | 0 | 0 | 0 | 0 | 0 | 0 | 0 | 0 | 0 | 0 | 0 | 0 | 0 | 0 | 0 | 0 | 0 | 0 | 0 | 0 | 0 |
| 28-Dec | PH1 | 0 | 0 | 3 | 0 | 0 | 0 | 0 | 0 | 0 | 0 | 0 | 0 | 0 | 0 | 0 | 0 | 0 | 0 | 0 | 0 | 3 |
| 28-Dec | PH2 | 0 | 0 | 0 | 0 | 2 | 0 | 0 | 0 | 0 | 0 | 0 | 0 | 0 | 0 | 0 | 0 | 0 | 0 | 0 | 0 | 2 |
| 28-Dec | PH3 | 0 | 0 | 0 | 0 | 0 | 0 | 0 | 0 | 0 | 0 | 0 | 0 | 1 | 0 | 0 | 0 | 0 | 0 | 0 | 0 | 1 |
| 28-Dec | SW1 | 0 | 0 | 0 | 0 | 0 | 0 | 0 | 0 | 0 | 0 | 0 | 0 | 0 | 0 | 0 | 0 | 0 | 0 | 0 | 0 | 0 |
| 28-Dec | SW2 | 0 | 0 | 0 | 0 | 0 | 0 | 54 | 0 | 0 | 0 | 0 | 0 | 0 | 0 | 0 | 0 | 0 | 0 | 0 | 0 | 54 |
| 28-Dec | SW3 | 0 | 0 | 0 | 0 | 0 | 0 | 0 | 0 | 0 | 0 | 0 | 0 | 0 | 0 | 0 | 0 | 0 | 0 | 0 | 0 | 0 |
| Avg/Survey | | 0 | | 8 | | 2 | | 54 | | 0 | | 0 | | 1 | | 0 | | 0 | | 0 | | 65 |
| 29-Dec | PHFB | 0 | 0 | 0 | 0 | 1 | 0 | 11 | 0 | 0 | 0 | 0 | 0 | 0 | 0 | 0 | 0 | 0 | 0 | 0 | 0 | 12 |
| 29-Dec | SWFB | 0 | 0 | 0 | 0 | 0 | 0 | 0 | 0 | 0 | 0 | 0 | 0 | 0 | 0 | 0 | 0 | 0 | 0 | 0 | 0 | 0 |
| 29-Dec | PH1 | 3 | 0 | 0 | 0 | 3 | 0 | 0 | 0 | 0 | 0 | 0 | 0 | 0 | 0 | 0 | 0 | 0 | 0 | 0 | 0 | 6 |
| 29-Dec | PH2 | 0 | 0 | 0 | 0 | 0 | 0 | 0 | 0 | 0 | 0 | 0 | 0 | 0 | 0 | 0 | 0 | 0 | 0 | 0 | 0 | 0 |
| 29-Dec | PH3 | 0 | 0 | 0 | 0 | 0 | 0 | 0 | 0 | 0 | 0 | 0 | 0 | 0 | 0 | 0 | 0 | 0 | 0 | 0 | 0 | 0 |
| 29-Dec | SW1 | 0 | 0 | 0 | 0 | 0 | 0 | 0 | 0 | 0 | 0 | 0 | 0 | 0 | 0 | 0 | 0 | 0 | 0 | 0 | 0 | 0 |
| 29-Dec | SW2 | 0 | 0 | 0 | 0 | 0 | 0 | 27 | 0 | 0 | 0 | 0 | 0 | 0 | 0 | 0 | 0 | 0 | 0 | 0 | 0 | 27 |
| 29-Dec | SW3 | 0 | 0 | 0 | 0 | 0 | 0 | 0 | 0 | 0 | 0 | 0 | 0 | 0 | 0 | 0 | 0 | 0 | 0 | 0 | 0 | 0 |
| Avg/Survey | | 3 | | 0 | | 4 | | 38 | | 0 | | 0 | | 0 | | 0 | | 0 | | 0 | | 45 |
| 30-Dec | PHFB | 0 | 0 | 0 | 0 | 0 | 0 | 1 | 0 | 0 | 0 | 0 | 0 | 0 | 0 | 0 | 0 | 0 | 0 | 0 | 0 | 1 |
| 30-Dec | SWFB | 0 | 0 | 3 | 0 | 0 | 0 | 0 | 0 | 0 | 0 | 0 | 0 | 0 | 0 | 0 | 0 | 0 | 0 | 0 | 0 | 3 |
| 30-Dec | PH1 | 2 | 0 | 0 | 0 | 1 | 0 | 0 | 0 | 0 | 0 | 0 | 0 | 0 | 0 | 0 | 0 | 0 | 0 | 0 | 0 | 3 |
| 30-Dec | PH2 | 0 | 0 | 0 | 0 | 0 | 0 | 0 | 0 | 0 | 0 | 0 | 0 | 0 | 0 | 0 | 0 | 2 | 0 | 0 | 0 | 2 |
| 30-Dec | PH3 | 0 | 0 | 0 | 0 | 0 | 0 | 0 | 0 | 0 | 0 | 0 | 0 | 0 | 0 | 0 | 0 | 0 | 0 | 0 | 0 | 0 |
| 30-Dec | SW1 | 0 | 0 | 0 | 0 | 0 | 0 | 0 | 0 | 0 | 0 | 0 | 0 | 0 | 0 | 0 | 0 | 0 | 0 | 0 | 0 | 0 |
| 30-Dec | SW2 | 0 | 0 | 0 | 0 | 0 | 0 | 53 | 0 | 0 | 0 | 0 | 0 | 0 | 0 | 0 | 0 | 0 | 0 | 0 | 0 | 53 |
| 30-Dec | SW3 | 0 | 0 | 0 | 0 | 0 | 0 | 0 | 0 | 0 | 0 | 0 | 0 | 0 | 0 | 0 | 0 | 0 | 0 | 0 | 0 | 0 |
| Avg/Survey | | 2 | | 3 | | 1 | | 54 | | 0 | | 0 | | 0 | | 0 | | 2 | | 0 | | 62 |

Foraging Piscivorous Birds



Non-Foraging Piscivorous Birds

